

Meiyad 美亞迪



Shenzhen Meiyad Optoelectronics Co.,Ltd.

Global Service Hotline: +86-135 3053 5995

Tel:+86-755-82687591 Fax:+86-755-82687591

Email:sales@mydled.com

Address:No.9, The Third Industrial Zone of Nangang, Tangtou, Shiyan, Bao'an District, Shenzhen, China

Meiyad[®]

美亞迪



MEIYAD
OPTOELECTRONICS

LED Display R&D, Sales, Service, Solution Provider

OUTLOOK

Meiyad focuses on integrating the upstream and downstream industry chain of LED display industry, strengthening the R&D power, large-scale standardized production, innovating the hardware and software, perfecting the serving system. Meiyad aims to become a company which integrates R&D, manufacturing, retail and serving of global LED application products.

CATALOGUE

COMPANY PROFILE

Shenzhen Meiyad Optoelectronics Co, Ltd. was founded in 2008, which is a national high-tech enterprise with concentrating on R&D, manufacturing, retail and serving of LED display.

CASES SHOW

Every case reflects our professional level and serious responsible attitude.

PRODUCTS

- Indoor Flexible LED Display
- Outdoor Flexible LED Display
- LED Poster
- Indoor & Outdoor Full Color SMD LED Display Series
- Indoor Customized LED Display Series
- Small Pixel Pitch LED Display
- Rental LED Display
- Front & Back Maintenance LED Display
- Outdoor Energy Saving LED Display
- Outdoor Single & Double Color LED Module Series



Company profile

Shenzhen Meiyad Optoelectronics Co, Ltd. was founded in 2008. Meiyad is a national high-tech enterprise which focuses on R&D, manufacturing, retail and serving of LED display. We have our own operation center and manufacturing base in Shenzhen.

Our products are widely used in indoor and outdoor commercial meida, sports venues, stage performances, special-shape creativity, etc. We also provide LED display integrated solutions. With the development of technology and manufacture workmanship, we have made many classical cases in the international market, and become one of the representative of "made in China" and "create in China" in international LED product applications.

Nowadays, we have more than 5000 successful cases from all over the world. We win the trust of international brands and appear at many global competitions and international activities, attracting thousands of customers' attention. We cling to our operation belief: "high-performance product, high-level technology, high-quality seving" . We cling to customers-centric and keep creating based on customers' demand, winning respect and trust. We have gained many awards like: "National High-Tech Enterprise" , "LED Industry Top Ten Leading Technology Idustry" , " China LED Display Top Ten Application Brand" , "AAA Credit Enterprise" , etc. Also, our products have already passed the Quality Management System Certification of ISO9001:2008 and the Environmental Management System Certification of ISO14001.

We focus on integrating the upstream and downstream industry chain, strengthening the R&D power, large-scale standardized production, innovating the hardware and software, perfecting the service system. We aim to be an integrated provider with manufacture, retail and service in the LED display industry.



Meiyad focuses on integrating the upstream and downstream industry chain, strengthening the research and development power, large-scale standardized production, innovating the hardware and software, perfecting the service system.



With the development of technology and manufacture workmanship, Meiyad has made many classical cases in the international market, and become one of representative of "made in China" and "create in China" in international LED product applications.



Meiyad focuses on integrating the upstream and downstream industry chain of LED display industry, strengthening the research and development power, large-scale standardized production, innovating the hardware and software, perfecting the service system.

Light the world and lead the future



☎ Tel: +86-135 3053 5995
 📠 Fax: +86-755-82687591
 ✉ Email: sales@mydled.com
 📞 WhatsApp: +86 135 3053 5995

📍 Add: No.9, The Third Industrial Zone of Nangang,
 Tangtou, Shiyan, Bao'an District, Shenzhen, China
 🌐 Web: www.myddisplay.com
 📞 Web: +86 135 3053 5995

General Manager Speech

Looking back on the ups and downs, then look at today's glory. Nowadays, Meiyad has been a super star of China LED industry after nearly ten years hard work and rapid development.

Shenzhen Meiyad Optoelectronics Co, Ltd. was founded in 2008, which is wholly-owned subsidiaries of Meiyad bloc. It is located in the Third Industrial Zone of Nangang, Tangtou, Shiyan, Bao'an District, Shenzhen. Shenzhen Meiyad is a domestic leading supplier of LED products and solutions, which have a complete system of R&D, manufacture, retail and serving. We devote ourselves to provide high-quality, high-performance LED application products and solutions to clients. In domestic market, Meiyad makes friendly stable long-term relationship with clients. In oversea market, people can find our products in the United States, Europe, Japan, Middle east area and part of African countries. Meiyad has built a national brand of LED display industry with our excellent achievements.

The increasing amount of clients is our honor and motivation. The sacred mission "Provide the best product, make endless value." will be never forgotten.

Talents are our treasure. I appreciate every staff who create Meiyad's glory. And, we hope any person who has dream join us and build brighter future together.



Technology Advantage

Well-equipped Production Base
 Comfortable & Tidy Work Environment
 Advanced & Energy-saving & Green
 Equipments
 Advanced Technology
 Enthusiastic & Professional Staffs



To be a global leader in LED display industry which integrates R&D, manufacturing, retail and serving.

Shenzhen Meiyad
 Optoelectronics Co, Ltd.



50+ LED Encapsulation
 Lines
 Perfect Industrial Chain
 Advanced & Professional
 Test Machines
 Professional & Powerful
 R&D Teams

Workshop
 Equipments



Outdoor LED Display Waterproof Test

IP65 Waterproof Rating
A fully rated outdoor product is key to guaranteeing the longevity of your outdoor advertising LED display screen

Shenzhen Meiyad Optoelectronics Co, Ltd.



Brightness Gun for the checking of the brightness



The Oven with 65-70 celes degree for the quality checking of the LED chip and IC



Trive for excellence, keep improving

→ Quality system

When you choose Meiyad, you will gain the confidence and trust from our products. We guarantee reparation, replacement and return for all products on sale. All raw materials are provided by high-quality suppliers, in order to ensure the quality. Our factories produce and test our products strictly according to the specification. In order to ensure the quality, every production step must be strictly controlled by the IOS. All products must be tested by the test procedure to ensure that the finished products pass rate of 99%.

Share our progress, keep moving together

→ Company Culture

Corporate Goal:

To be an integrated provider with manufacture, retail and service in the LED display industry.

Corporate Culture:

Honesty, Gratitude, Honor, Responsibility

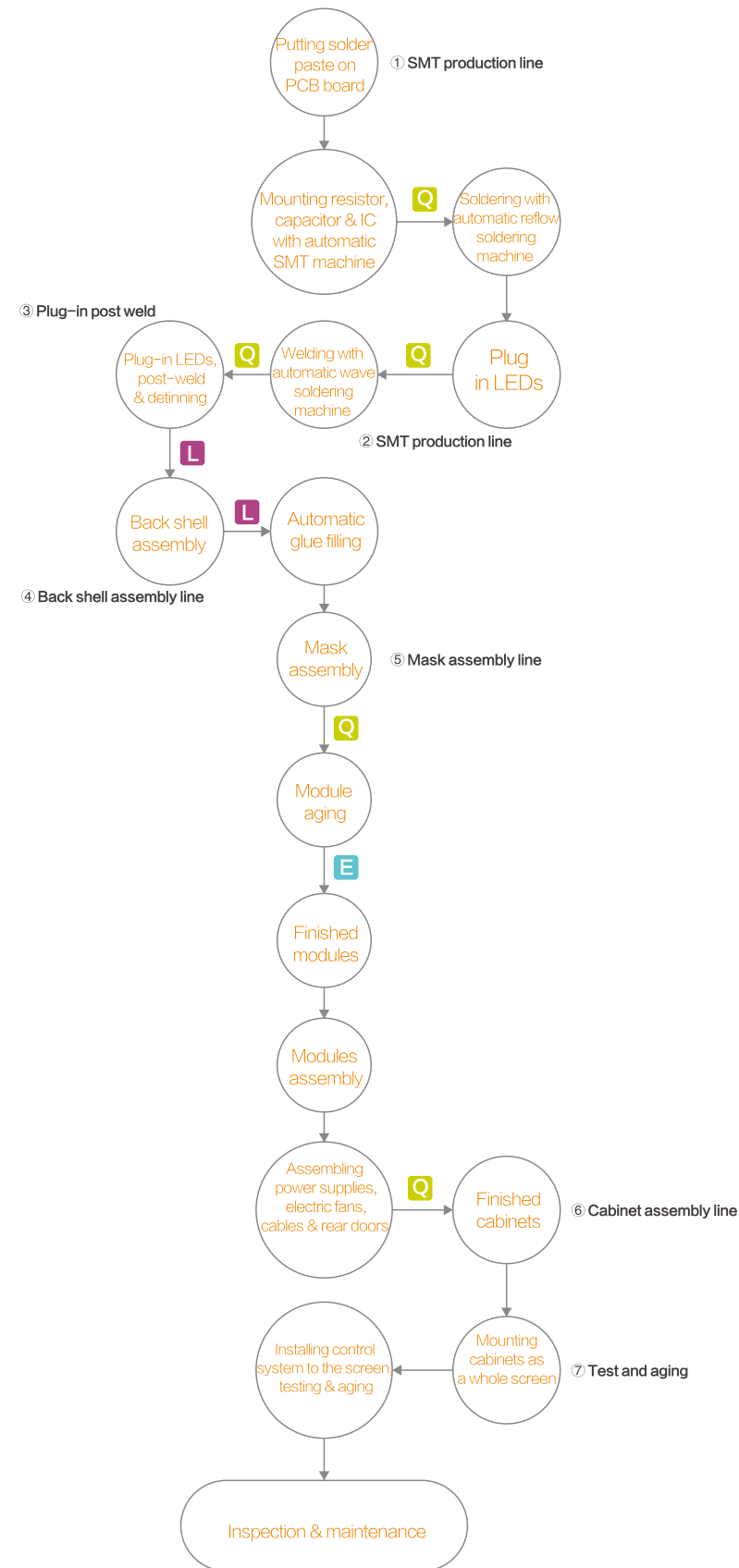
Quality Policy:

Clients' satisfaction is the highest pursuit, keep improving is the everlasting goal.

Social Responsibility:

Friendly, Harmonious, Shared, Everlasting

Company Mission: The increasing amount of clients is our honor and motivation. Hopefully we can create a better future.



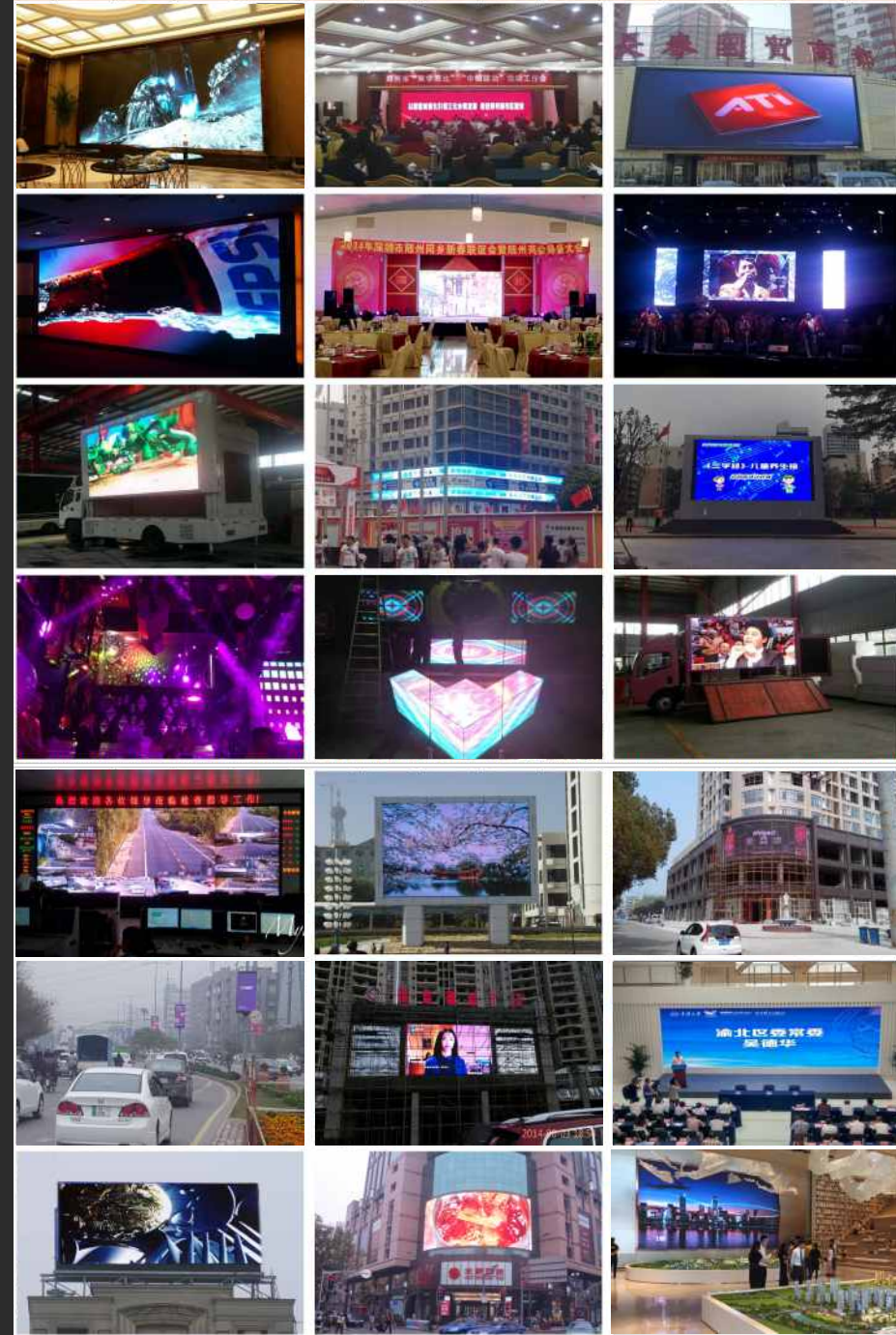
Qualification Certificate



Company cases

Every case reflects our professional level and serious responsible attitude.

To be an integrated provider with manufacture, retail and service in the LED display industry.



LED display

Indoor and outdoor monochrome

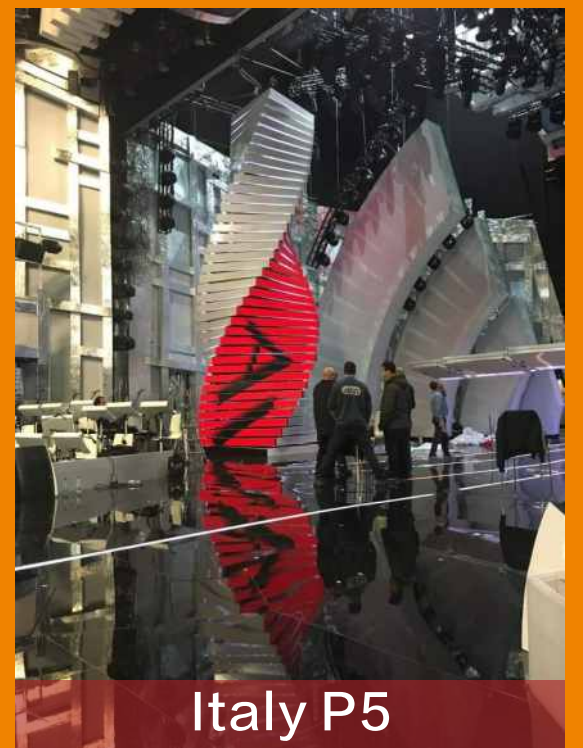
Full-color

Landscape

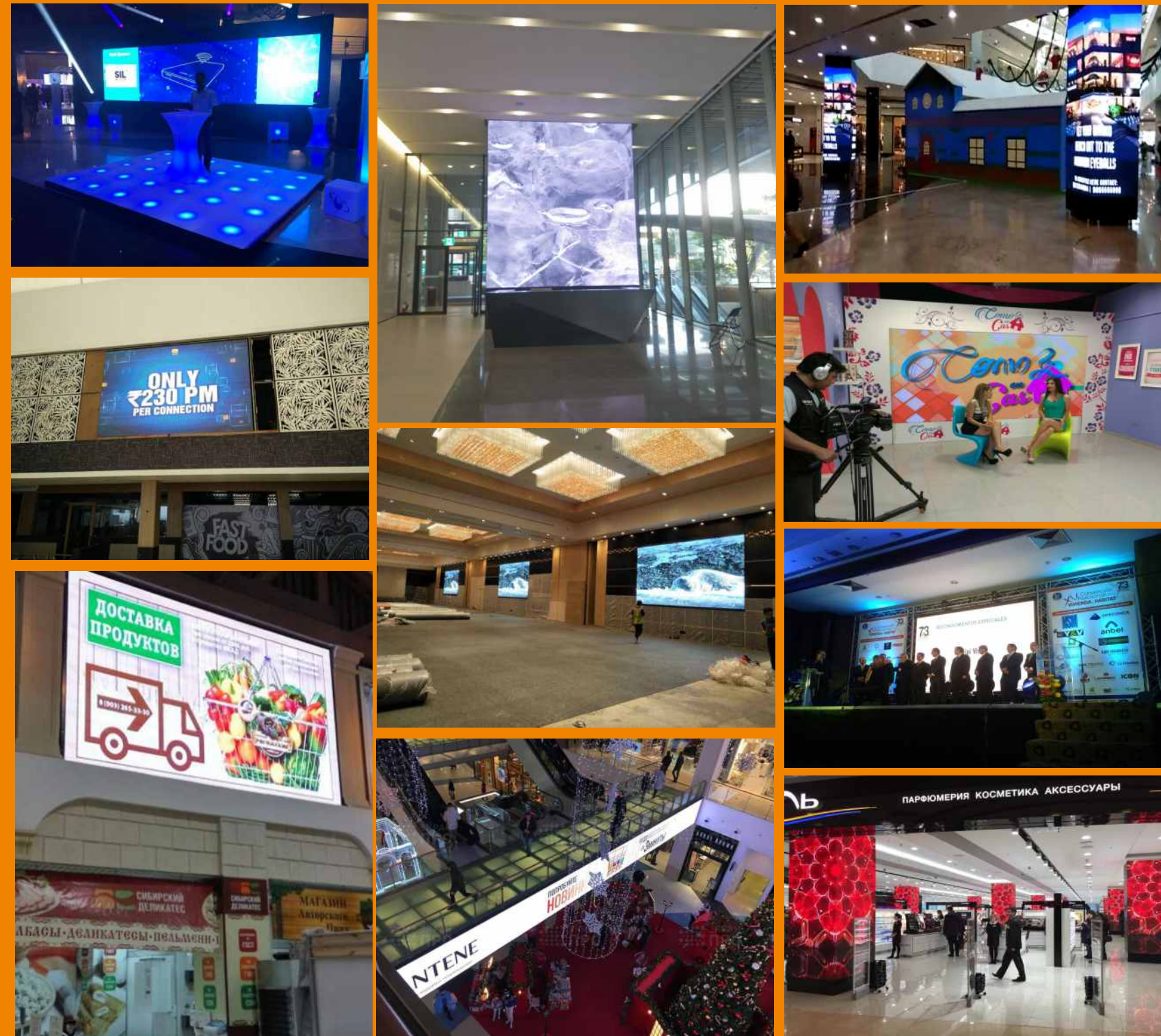
Commercial

Office

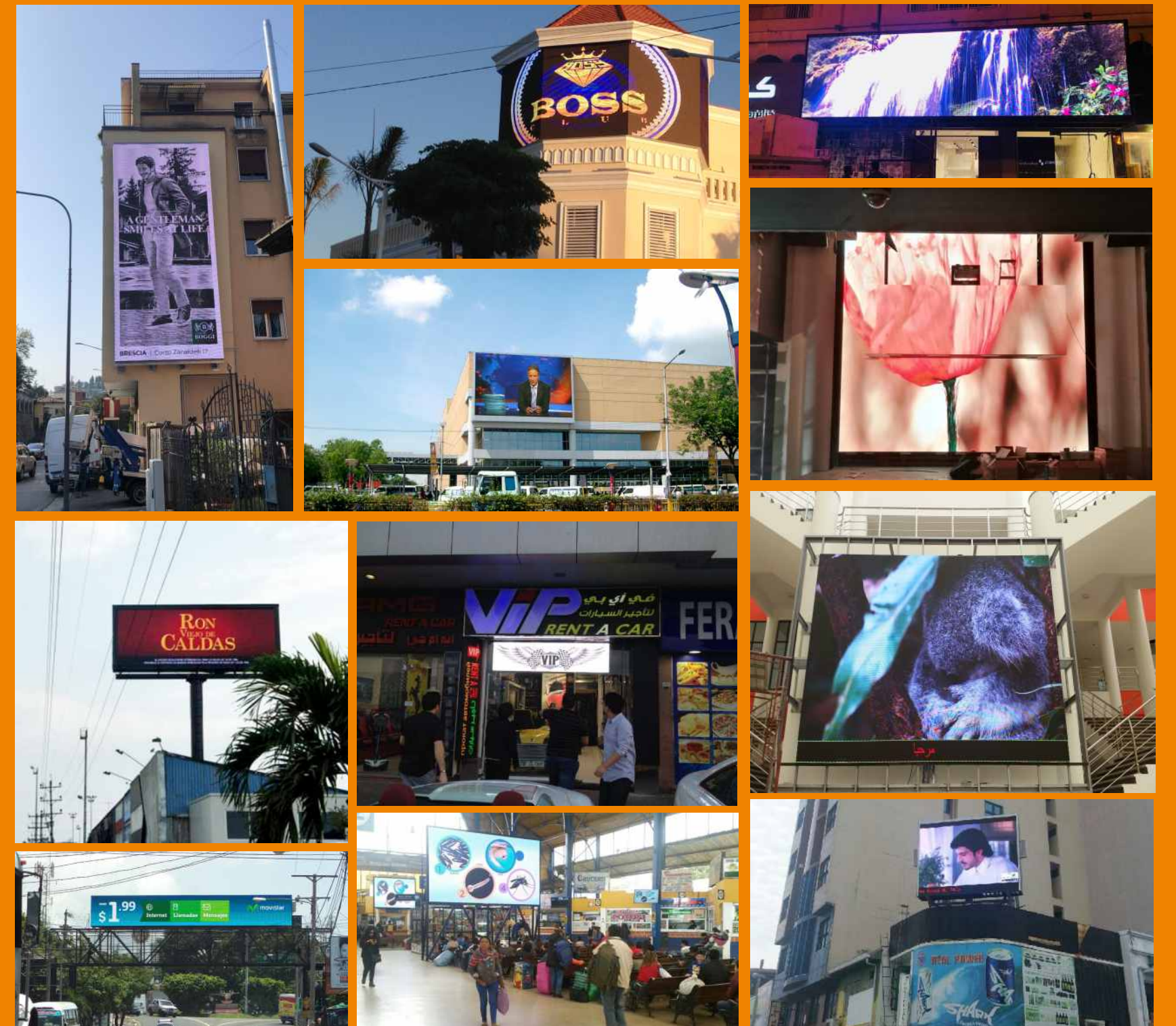
Flexible LED Display Application



Domestic and Oversea Indoor Application



Domestic and Oversea Outdoor Application



Indoor Flexible LED Display



High Flexibility



Ultra Wide Viewing Angle



Firm Construction



High Protection



Adjustable Brightness



Easy Maintenance

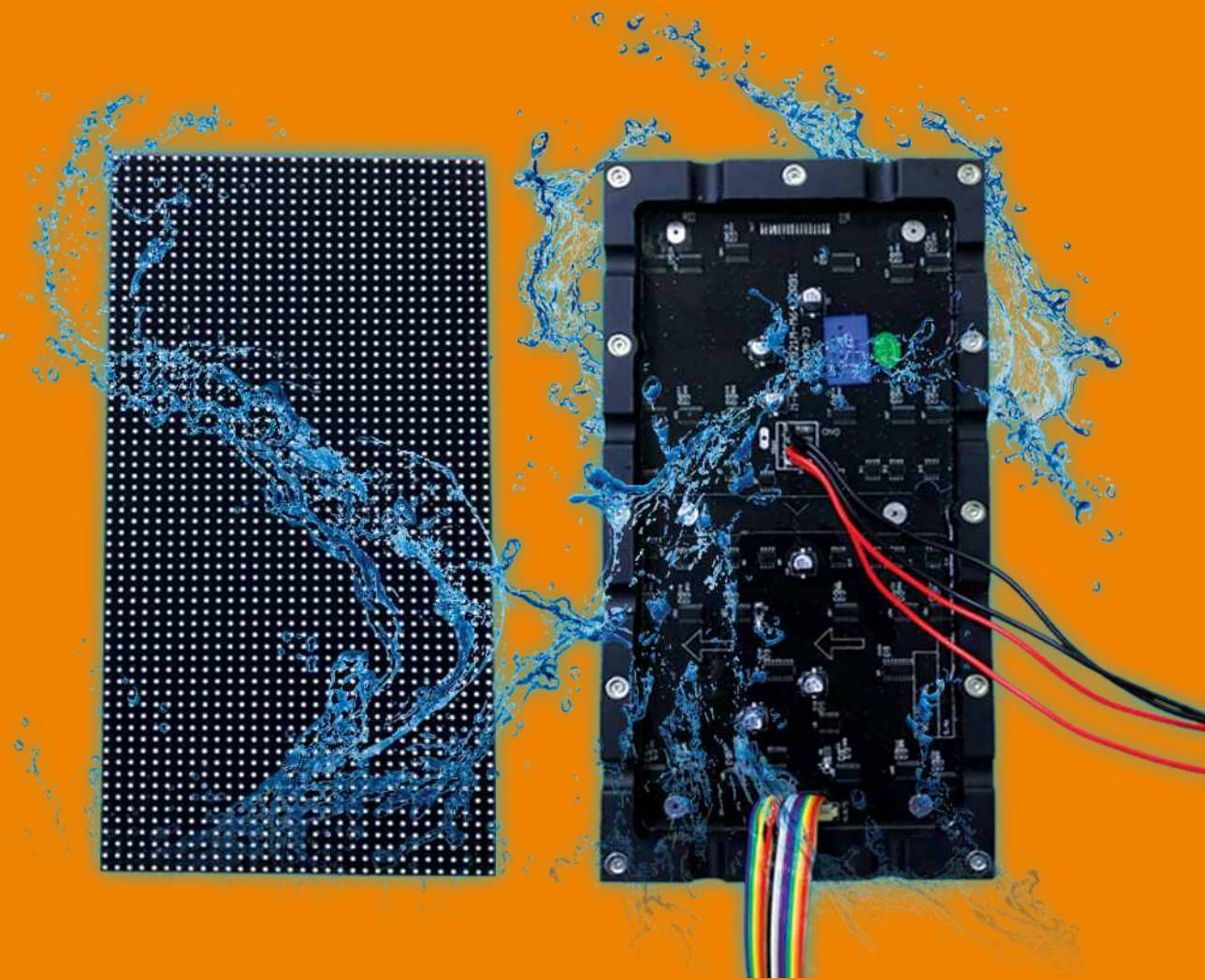
Indoor Flexible LED Display

SPECIFICATION

| Pixel Pitch(mm) | P1.526 | P2 | P2.5 | P3 | P4 | P5 | P6 | P8 | P10 |
|--------------------------------------|--|----------|-------------|-------------|----------|-------------|-------------|-------------|-------------|
| LED Configuration | SMD 1010 | SMD 1010 | SMD 1010 | SMD 1515 | SMD 2121 | SMD 2121 | SMD 3528 | SMD 3528 | SMD 3528 |
| Pixel Density(pixel/m ²) | 409600 | 250000 | 160000 | 111111 | 62500 | 40000 | 27777 | 15625 | 10000 |
| Module Size(mm) | 200*150 | 256*128 | 240*120*1.6 | 240*120*1.6 | 256*128 | 320*160*1.6 | 192*192*1.6 | 256*128*1.6 | 320*160*1.6 |
| Module Resolution(dot) | 128*96 | 128*64 | 96*48 | 80*40 | 64*32 | 64*32 | 32*32 | 32*16 | 32*16 |
| Scan Mode | 32S | 32S | 30S | 20S | 16S | 16S | 8S | 4S | 4S |
| Brightness(cd/m ²) | ≥800 | ≥700 | ≥1400 | ≥800 | ≥1400 | ≥900 | ≥2500 | ≥2800 | ≥2000 |
| Viewing Angle | 120° | 120° | 120° | 120° | 120° | 120° | 120° | 120° | 120° |
| Environment | Indoor | Indoor | Indoor | Indoor | Indoor | Indoor | Indoor | Indoor | Indoor |
| Brightness Adjustment | 0-255 Levels adjustable | | | | | | | | |
| Control Mode | Synchronous display with control PC by DVI | | | | | | | | |
| Input Signal | Composite,S-Vido,component,VGA,DVI,HDMI,HD-SDI | | | | | | | | |
| Operating Voltage | AC100/24050/60HZ | | | | | | | | |
| Operating Temperature | -20°C ~ +60°C | | | | | | | | |
| Operating Humidity | 10 ~ 90%RH | | | | | | | | |
| Lifespan(h) | 100,000hours | | | | | | | | |



Outdoor Flexible LED Display



High Flexibility



Ultra Wide Viewing Angle



Super Thin and Light



IP67 Outdoor Waterproof



Adjustable Brightness



Easy Maintenance

Outdoor Flexible LED Display

SPECIFICATION

| | | | |
|--------------------------------------|----------------------------|-----------------------|-------------------------------|
| Pixel Pitch(mm) | P4 | Environment | Outdoor |
| Best Viewing Distance | ≥4m | LED Configuration | SMD1921 |
| Pixel Density(pixel/m ²) | 62500 pixel/m ² | Module Size(mm) | 256mmX128mm |
| Module Resolution(dot) | 64x32 pixel | Pixel Configuration | 1R1G1B SMD |
| Scan Mode | 16S | Drive Mode | 16-bit constant current drive |
| Brightness(cd/m ²) | ≥4500 cd/m ² | Display Colors | 281 Trillion |
| Viewing Angle | 140°(V)/ 140°(H) | Voltage | 220/110V AC |
| Protective Level | IP67 | Module Weight | 0.382 kg |
| Average Power Consumption | 27.5 w/pcs | Max Power Consumption | 13.75 w/pcs |
| Operating Temperature | -20°C ~ +60°C | Operating Humidity | 10~90%RH |
| Refresh Rate(Hz) | 1920Hz | Lifespan(h) | 100,000hours |
| Color Temperature | 9000±500K | Brightness Adjustment | 0-255 Levels adjustable |



LED Poster



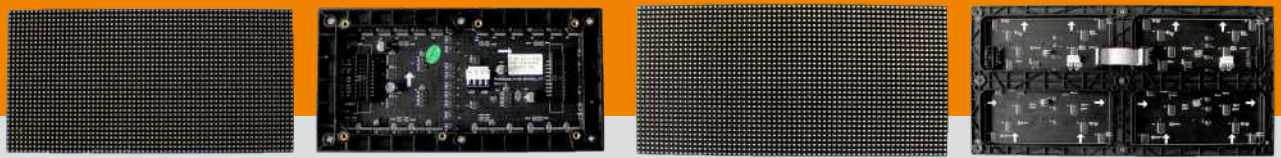
- Characteristic :**
1. High brightness, high contrast, high gray level, high light transmission surface of PVC material protection.
 2. By network cable, U disk, WiFi, 4G (remote) to control and update the data.
 3. No need to install, debug, power up and use.
 4. The back of the led poster is equipped with hidden pole, which can be pulled apart when used and put away after use.
 5. This Machine makes up for shortcomings of semi-outdoor LCD screen, like low brightness, small size, low UV Protection and no gorgeous color, etc.

SPECIFICATION

| Product Line | MYD-Semi-Outdoor LED Poster (ultra-thin series) | | |
|--------------------------------------|---|----------------------------|----------------------------|
| Pixel Pitch(mm) | 2mm | 2.5mm | 3mm |
| LED Configuration | SMD1515 | SMD2121 | SMD2121 |
| Pixel Density(pixel/m ²) | 250000 | 160000 | 111111 |
| LED Configuration | 1R1G1B | 1R1G1B | 1R1G1B |
| Viewing Angle | (H)120° / (V)120° | (H)120° / (V)120° | (H)120° / (V)120° |
| Brightness(cd/m ²) | ≥1200 | ≥1200 | ≥1200 |
| Contrast (max) | 3000 : 1 | 3000 : 1 | 3000 : 1 |
| Scan Mode | 32S | 32S | 16S |
| Gray Scale | 65536 | 65536 | 65536 |
| Refresh Rate(Hz) | 1920Hz | 1920Hz | 1920Hz |
| Module Size(mm) | 256*128 | 320*160 | 192*192 |
| Module Resolution(dot) | 960*256 | 768*256 | 640*192 |
| Display Area | 0.98m ² (73") | 1.23m ² (80") | 1.1m ² (75") |
| Power Consumption(w/m ²) | 250W | 250W | 350W |
| Power Consumption (Max) | 750W | 750W | 1000W |
| Overall Dimensions(mm) | (H)1975.2*(L)567.2*(D)59.8 | (H)1975.2*(L)695.2*(D)59.8 | (H)1975.2*(L)631.2*(D)59.8 |
| Total Weight | 40KG | 40KG | 40KG |
| Protection Level | IP43 | IP43 | IP43 |
| Lifespan(h) | ≥100000 | ≥100000 | ≥100000 |
| Working Voltage(v) | AC 90~260V/AC 100~120V/AC 200-240V | | |
| Environment Temperature | Operating:-20°C ~ 60°C/Storage:-40°C ~ 85°C | | |



Indoor Full Color SMD LED Display Series



Characteristic :

1. Firm Construction: Produce cabinet through stamping and folding processing, so it has high strength; The product has precise size and good consistency with numerical control technique.
2. Adjustable Brightness: Adjust brightness through special technique without the sacrifice of gray scale and signal quality.
3. Ultra Wide Viewing Angle: Showing excellent visual effect at different viewing angle.
4. Easy Maintenance: Cabinet has rear-opening design; Module supports front & rear maintenance.
5. Standardization: Convenient installation; Quick delivery.
6. Energy-saving: Good heat dispersion, low power consumption, high stability.



SPECIFICATION

| | | | | | | |
|--------------------------------------|--|------------|--------------------|--------------------|--------------------|------------|
| Pixel Pitch(mm) | 2.5 | 3 | 4 | 5 | 6 | 10 |
| LED Configuration | SMD2121 | SMD2121 | SMD2121 | SMD2121 | SMD3528 | SMD3528 |
| Pixel Density(pixel/m ²) | 160000 | 111111 | 62500 | 40000 | 27777 | 10000 |
| Module Size(mm) | 160*160 240*240 | 192*192 | 256*128 240*240 | 160*160 320*160 | 192*192 384*192 | 320*160 |
| Module Resolution(dot) | 64*64 96*96 | 64*64 | 64*32 60*60 | 32*32 64*32 | 32*32 64*32 | 32*16 |
| Scan Mode | 32S | 16S/32S | 16S/15S | 16S | 8S/16S | 4S/8S |
| Brightness(cd/m ²) | ≥1400/≥1400 | ≥1400/≥900 | ≥1100/≥1400 | ≥800/≥800 | ≥2200/≥1100 | ≥1800/≥900 |
| Viewing Angle | 140° | 140° | 140° | 140° | 140° | 140° |
| Environment | Indoor | Indoor | Indoor | Indoor | Indoor | Indoor |
| Brightness Adjustment | 0-100 Levels adjustable | | | | | |
| Control Mode | Synchronous display with control PC by DVI | | | | | |
| Input Signal | Composite,S-Vido,component,VGA,DVI,HDMI,HD-SDI | | | | | |
| Operating Voltage | AC100/24050/60HZ | | | | | |
| Operating Temperature | -20°C ~ +60°C | | | | | |
| Operating Humidity | 10~90%RH | | | | | |
| Lifespan(h) | 100,000hours | | | | | |

Outdoor Full Color SMD LED Display Series



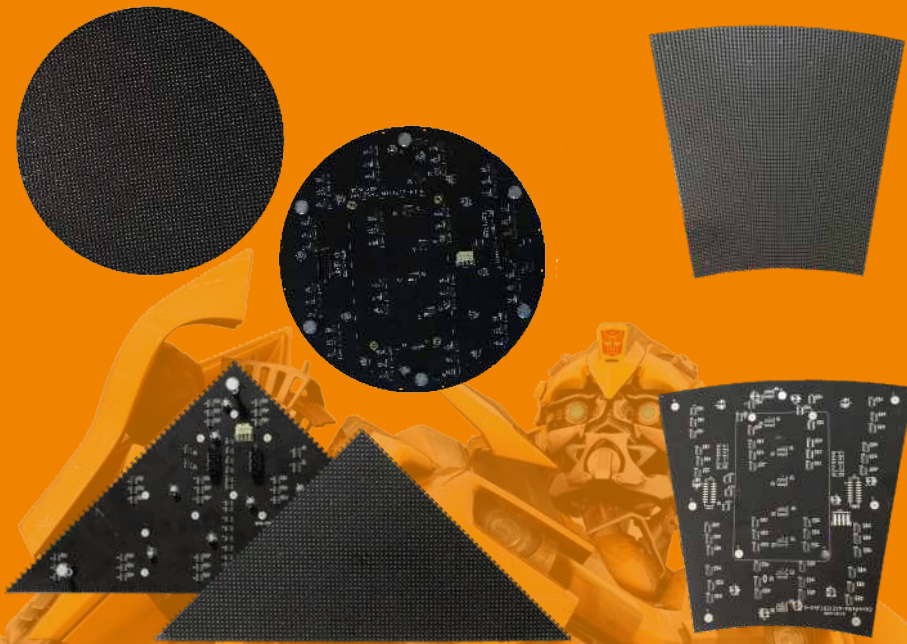
- Characteristic :**
1. Firm Construction: Produce cabinet through stamping and folding processing, so it has high strength; The product has precise size and good consistency with numerical control technique.
 2. Adjustable Brightness: Adjust brightness through special technique without the sacrifice of gray scale and signal quality.
 3. Ultra Wide Viewing Angle: Showing excellent visual effect at different viewing angle.
 4. High Protection: Waterproof, dust-proof, damp-proof, anti-corrosion; Can work in various harsh environment for a long time.
 5. Easy Maintenance: Cabinet has rear-opening design; Module supports front & rear maintenance.
 6. Standardization: Convenient installation; Quick delivery.
 7. Energy-saving: Good heat dispersion, low power consumption, high stability.



SPECIFICATION

| | | | | | | | | | |
|-------------------------|--|--------------------|------------------|---------|--------------------|-----------------|-----------------|---------|----------|
| Pixel Pitch(mm) | 4 | 5 | 6 | 6.67 | 8 | 10 | 12 | 16 | 10 |
| LED Configuration | SMD1921 | SMD2727 | SMD2727 | SMD3535 | SMD3535 | SMD3535 | SMD3535 | SMD3535 | DIP 346 |
| Pixel Density(pixel/m²) | 62500 | 40000 | 27777 | 22500 | 15625 | 10000 | 6944 | 3906 | 10000 |
| Module Size(mm) | 256*128 | 160*160 320*160 | 192*192 | 320*160 | 256*128 320*160 | 320*160 | 192*192 | 256*256 | 160*160 |
| Module Resolution(dot) | 64*32 | 32*32/64*32 | 32*32 | 48*24 | 32*16/40*20 | 32*16 | 16*16 | 16*16 | 16*16 |
| Scan Mode | 16S | 8S | 4S/8S | 6S | 4S/5S | 2S/4S | 2S/4S | Static | 4S |
| Brightness(cd/m²) | ≥5000 | ≥7500 | ≥10000 /≥5500 | ≥6000 | ≥6000 /≥5500 | ≥8000 /≥4000 | ≥5500 /≥2500 | ≥6600 | ≥7200 |
| Viewing Angle | 140° | 140° | 140° | 140° | 140° | 140° | 140° | 140° | 120°/60° |
| Environment | Outdoor | Outdoor | Outdoor | Outdoor | Outdoor | Outdoor | Outdoor | Outdoor | Outdoor |
| Brightness Adjustment | 0-100 Levels adjustable | | | | | | | | |
| Control Mode | Synchronous display with control PC by DVI | | | | | | | | |
| Input Signal | Composite,S-Vido,component,VGA,DVI,HDMI,HD-SDI | | | | | | | | |
| Operating Voltage | AC100/24050/60HZ | | | | | | | | |
| Operating Temperature | -20°C ~ +60°C | | | | | | | | |
| Operating Humidity | 10~90%RH | | | | | | | | |
| Lifespan(h) | 100,000hours | | | | | | | | |

Indoor Customized LED Display Series



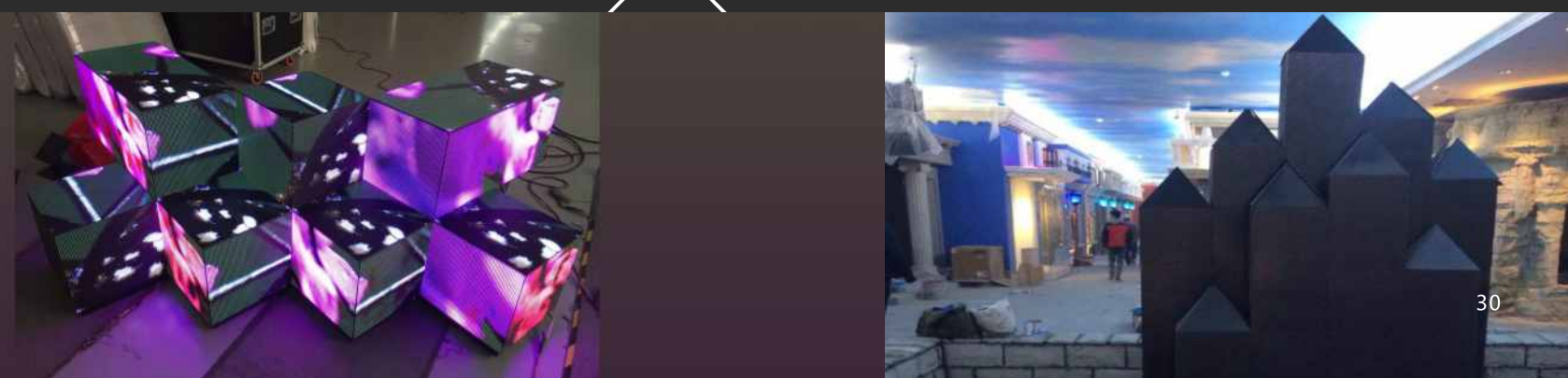
- High Flexibility
- Ultra Wide Viewing Angle
- Firm Construction
- High Protection
- Adjustable Brightness
- Easy Maintenance



Indoor Customized LED Module Series

SPECIFICATION


| Pixel Pitch(mm) | Circular P4 | Isosceles triangle P4 | Equilateral triangle P4 | Isosceles triangle P5 | Equilateral triangle P5 |
|------------------------------------|--|-----------------------|-------------------------|-----------------------|-------------------------|
| LED Configuration | SMD 2121 | SMD 2121 | SMD 2121 | SMD 2121 | SMD 2121 |
| Pixel Density(dot/m ²) | 62500 | 62500 | 62500 | 40000 | 40000 |
| Module Size(mm) | φ258mm Plane circle | 122*176*88 | 218*212*192 | 200*346*100 | 319*319*276 |
| Module Resolution(dot) | πR2→3215spot | 44*22 | 53*48 | 66*20 | 64*54 |
| Scan Mode | 16S | 11S | 12S | 10S | 14S |
| Brightness(cd/m ²) | ≥1000 | ≥1700 | ≥1300 | ≥1000 | ≥900 |
| Viewing Angle | 140° | 140° | 140° | 140° | 140° |
| Environment | Indoor | Indoor | Indoor | Indoor | Indoor |
| Brightness Adjustment | 0-255 Levels adjustable | | | | |
| Control Mode | Synchronous display with control PC by DVI | | | | |
| Input Signal | Composite,S-Vido,component,VGA,DVI,HDMI,HD-SDI | | | | |
| Operating Voltage | AC100/24050/60HZ | | | | |
| Operating Temperature | -20°C ~ +60°C | | | | |
| Operating Humidity | 10~90%RH | | | | |
| Lifespan(h) | 100,000hours | | | | |




Small Pixel Pitch LED Display





 **Low Power Consumption**
Spend 30% less energy than traditional products


 **High Contrast**
Maximum contrast ratio is 5000:1


 **High Definition**
Maximum resolution ratio is 1080P

 **High Gray Scale**
Gray scale processing up to 16nit

 **High Refresh Rate**
The refresh rate is above 3200Hz

 **Wide Viewing Angle**
Horizontal angle up to 160

 **Seamless Splicing**
CNC high precision processing

 **Adjustable Brightness**
Wide range of brightness adjustment, reaching 200-1500Lm, to meet different needs



SPECIFICATION

| Product Line | MYD-U-I Small Pitch Series (Ultra High Definition) | | | | |
|--------------------------------------|--|-----------------|-----------------|-----------------|-----------------|
| Item | MYD-P1.25HI1 | MYD-P1.5625HI1 | MYD-P1.667HI1 | MYD-P1.875HI1 | MYD-P1.923HI1 |
| Pixel Pitch(mm) | 1.25 | 1.5625 | 1.667 | 1.875 | 1.923 |
| Pixel Density(pixel/m ²) | 640000 | 409600 | 360000 | 284440 | 270400 |
| LED Configuration | SMD0808 | SMD1010 | SMD1010 | SMD1515 | SMD1010 |
| Viewing Angle | X、Y160° | X、Y160° | X、Y160° | X、Y160° | X、Y160° |
| Brightness(cd/m ²) | ≥300-800 | ≥800 | ≥800 | ≥800 | ≥800 |
| Scan Mode | 27S | 32S | 30S | 32S | 26S |
| Gray Scale | ≥14Bit | ≥14Bit | ≥14Bit | ≥14Bit | ≥14Bit |
| Refresh Rate(Hz) | ≥2400Hz | ≥3840Hz | 2880Hz | 3000Hz | 2880Hz |
| Module Size(mm) | 240*135 | 200*150 | 200*150 | 240*240 | 200*300 |
| Cabinet Size(mm) | 480*270 | 400*300 | 400*300 | 480*480 | 400*300 |
| Cabinet Material | Die-casting Aluminum | | | | |
| Working Voltage(v) | 110-220V | 110-220V | 110-220V | 110-220V | 110-220V |
| Power Consumption(w/m ²) | 10-35W | 30W | 35W | 45W | 35W |
| Power Consumption (Max) | 50-100W | 80W | 100W | 140W | 100W |
| Maintenance Method | Front/Rear | Front/Rear | Front/Rear | Front/Rear | Front/Rear |
| Protection Level | IP30 | IP30 | IP30 | IP30 | IP30 |
| Operating Temperature | -20°C ~ 60°C | -20°C ~ 60°C | -20°C ~ 60°C | -20°C ~ 60°C | -20°C ~ 60°C |
| Storage Temperature | -40°C ~ 80°C | -40°C ~ 80°C | -40°C ~ 80°C | -40°C ~ 80°C | -40°C ~ 80°C |
| Lifespan(h) | ≥100000 | ≥100000 | ≥100000 | ≥100000 | ≥100000 |
| Certificates | CCC,CE,Rohs,FCC | CCC,CE,Rohs,FCC | CCC,CE,Rohs,FCC | CCC,CE,Rohs,FCC | CCC,CE,Rohs,FCC |

Rental LED Display



Characteristic :

- Quick: The cabinet can be connected or be dismantled within 15 seconds by hands.
- Fine: Made of die-casting aluminum, the cabinet tolerance is less than 0.1mm, and the flatness and splicing gap are less than 0.5mm.
- Easy: Can install and dismantle cabinet at different places; Easy to maintenance.
- Compatible: Easy to lifting, stacking, and fixed setting; Compatible with various pixel pitch.
- Stable: Passed the aging test at the temperature of 60°C and -20°C.
- Low : low power consumption, low noise, low transportation cost, low installation fees.



SPECIFICATION

| Product Line | Indoor Rental Display Screen | | | | Outdoor Rental Display | | | |
|--------------------------------------|------------------------------|----------------------|----------------------|----------------------|------------------------|----------------------|----------------------|----------------------|
| Item | IR 2.976 | IR 3.91 | IR 4.81 | IR 6.25 | OR 3.91 | OR 4.81 | OR 5.95 | OR 6.25 |
| Pixel Pitch(mm) | 2.976 | 3.91 | 4.81 | 6.25 | 3.91 | 4.81 | 5.95 | 6.25 |
| Pixel Density(pixel/m ²) | 112896 | 65536 | 43264 | 25600 | 65536 | 43264 | 28224 | 25600 |
| LED Configuration | SMD1515 | SMD2121 | SMD2121 | SMD3528 | SMD1920 | SMD2727 | SMD2727 | SMD3535 |
| Viewing Angle | X, Y120° | X, Y120° | X, Y120° | X, Y120° | X, Y120° | X, Y120° | X, Y120° | X, Y120° |
| Brightness(cd/m ²) | ≥1500 | ≥1200 | ≥1800 | ≥1500 | ≥4000 | ≥5000 | ≥6000 | ≥4500 |
| Scan Mode | 21S | 16S | 13S | 10S | 16S | 13S | 7S | 10S |
| Gray Scale | ≥14Bit | ≥14Bit | ≥14Bit | ≥14Bit | ≥14Bit | ≥14Bit | ≥14Bit | ≥14Bit |
| Refresh Rate(Hz) | 1920Hz | 1920Hz | 1920Hz | 1920Hz | 1920Hz | 1920Hz | 1920Hz | 1920Hz |
| Cabinet Material | Die-casting Aluminum | Die-casting Aluminum | Die-casting Aluminum | Die-casting Aluminum | Die-casting Aluminum | Die-casting Aluminum | Die-casting Aluminum | Die-casting Aluminum |
| Working Voltage(v) | 110-220V | 110-220V | 110-220V | 110-220V | 110-220V | 110-220V | 110-220V | 110-220V |
| Power Consumption(w/m ²) | 55W | 55W | 55W | 55W | 55W | 55W | 55W | 55W |
| Power Consumption (Max) | 160W | 160W | 160W | 160W | 160W | 160W | 160W | 160W |
| Maintenance Method | Front | Front | Front | Front | Rear | Rear | Rear | Rear |
| Protection Level | IP30/IP43 | IP30/IP43 | IP30/IP43 | IP30/IP43 | IP65 | IP65 | IP65 | IP65 |
| Operating Temperature | -20°C ~ 60°C | -20°C ~ 60°C | -20°C ~ 60°C | -20°C ~ 60°C | -20°C ~ 60°C | -20°C ~ 60°C | -20°C ~ 60°C | -20°C ~ 60°C |
| Storage Temperature | -40°C ~ 80°C | -40°C ~ 80°C | -40°C ~ 80°C | -40°C ~ 80°C | -40°C ~ 80°C | -40°C ~ 80°C | -40°C ~ 80°C | -40°C ~ 80°C |
| Lifespan(h) | ≥100000 | ≥100000 | ≥100000 | ≥100000 | ≥100000 | ≥100000 | ≥100000 | ≥100000 |
| Certificates | CCC,CE,Rohs,FCC | | | | CCC,CE,Rohs,FCC | | | |

Front & Back Maintenance LED Display



Saving Maintenance

IP65

IP65 Water proof



Wide Viewing Angle



Fast Maintenance



Fast Installation



SPECIFICATION

| Product Line | MYD-Front & Back Maintenance Series | | |
|--------------------------------------|-------------------------------------|--------------|--------------|
| | P8 | | P10 |
| Pixel Pitch(mm) | | | |
| Pixel Density(pixel/m ²) | 15625 | 15625 | 10000 |
| LED Configuration | SMD3535 | SMD3535 | SMD2727 |
| Viewing Angle | X、Y140° | X、Y140° | X、Y140° |
| Brightness(cd/m ²) | ≥6000 | ≥4500 | ≥7000 |
| Scan Mode | 4S | 5S | 2S |
| Gray Scale | ≥14Bit | ≥14Bit | ≥14Bit |
| Refresh Rate(Hz) | ≥1920Hz | 1920Hz | 1920Hz |
| Module Size(mm) | 256*128 | 320*320 | 320*320 |
| Module Weight | 350g | 1320g | 1350 |
| Module Resolution | 32*16 | 40*40 | 32*32 |
| Working Voltage(v) | DC5V±10% | DC5V±10% | DC5V±10% |
| Maximum Current | 5A | 12A | 18A |
| Power Consumption (Max) | 25W | 60W | 90W |
| Maintenance Method | Front/Rear | Front/Rear | Front/Rear |
| Color temperature | 9000±500K | 9000±500K | 9000±500K |
| Protection Level | IP65 | IP65 | IP65 |
| Operating Temperature | -20°C ~ 60°C | -20°C ~ 60°C | -20°C ~ 60°C |
| Storage Temperature | -40°C ~ 80°C | -40°C ~ 80°C | -40°C ~ 80°C |
| Working Humidity | 10%-90%RH | 10%-90%RH | 10%-90%RH |
| Lifespan(h) | ≥100000 | ≥100000 | ≥100000 |

Outdoor Energy Saving LED Display



The series use energy-saving chips, which can provide up to **70%** energy saving comparing with the traditional driver chips.

Characteristic :

1. Using LED with high light effect and will not lose any luminous chips.
2. High efficient power supply increases the efficiency of power supply conversion.
3. Excellent thermal design of the screen decreases the power consumption of fans.
4. Scientific circuit design decreases power consumption of internal wiring.
5. Adjust the brightness of outdoor LED display automatically according to the changing of surroundings.
6. Professional low transition voltage and high efficient current drive IC.

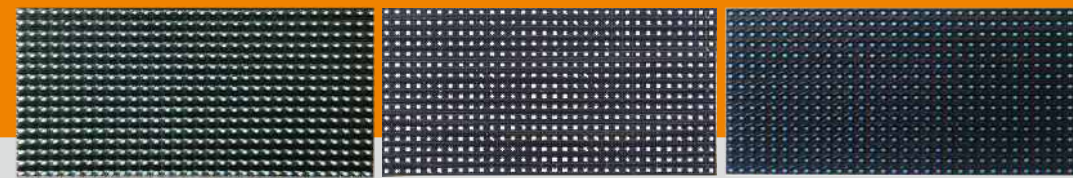
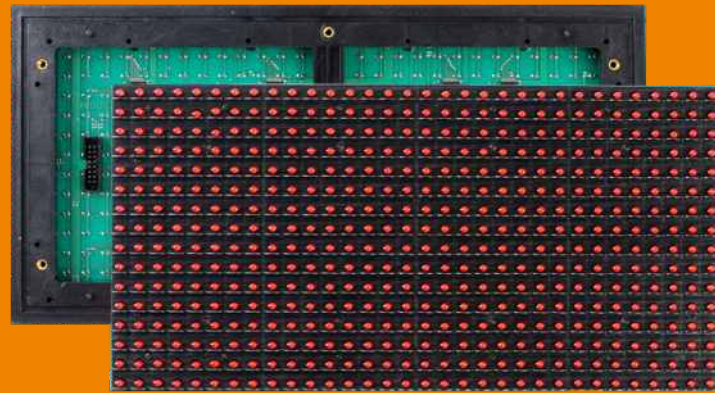


SPECIFICATION

| Display Specification | Outdoor Application | | | | | | | |
|--|---|--------|--------|--------------------|--------|--------|--------|--------|
| | P4 | P5 | P6 | P6.67 | P8 | P10 | P12 | P16 |
| Drive Mode | 8S | 8S | 8S | 6S | 4S | 2S | 2S | Static |
| Gray Scale | 16Bit | | | | | | | |
| Frame Rate | 120Hz | | | | | | | |
| Refresh Rate | 3840Hz | 3840Hz | 3840Hz | 3840Hz | 3840Hz | 3840Hz | 3840Hz | 3840Hz |
| Programme | Energy-saving Chip + Horizontal Blanking Chip | | | Energy-saving Chip | | | | |
| The scheme above can achieve the average power consumption of 100W/ square meters per hour, and can provide up to 70% energy saving. | | | | | | | | |

Cabinet Size(mm):960*960、640*640、500*500.

Outdoor Single & Double Color Module Series



Characteristic :

- 1.Modular construction shows that various size products can be assembled at will, and the maintenance is very easy.
- 2.Control chips and components with high brand values guarantee low failure rate and high quality.
- 3.Large chip LED has high brightness and long lifespan and the lifespan can up to 100,000h.
- 4.Product has dozens of display mode;move left and right,up and down,scroll,flicker,highlight etc.
- 5.The product can be operated easily and conveniently;its contents can be changed and updated through RS232/RS485 serial port,and USB communication.



SPECIFICATION

| Product Series | Single & Double Color Outdoor Module | | | | |
|--------------------------------------|--------------------------------------|------------------|------------------|------------------|------------------|
| Model | P10 | P10 | P10 | P10 | P10 |
| Pixel Pitch(mm) | 10 | 10 | 10 | 10 | 10 |
| Pixel Density(pixel/m ²) | 10000 | 10000 | 10000 | 10000 | 10000 |
| Type | Red | White | Blue | Green | Bi-color |
| Pixel (W*H) | 32*16 | 32*16 | 32*16 | 32*16 | 32*16 |
| Size (W * H) | 320*160 | 320*160 | 320*160 | 320*160 | 320*160 |
| Pixel Configuration | 1R | 1W | 1B | 1G | 1R 1G |
| Lamp type | DIP546 | DIP546 | DIP546 | DIP546 | DI546 |
| Scan Mode | 1/4S | 1/4S | 1/4S | 1/4S | 1/4S |
| Drive Mode | Constant voltage | Constant voltage | Constant voltage | Constant voltage | Constant voltage |
| Flat Cable(mm) | 200 | 200 | 200 | 200 | 200 |
| Power Cable(mm) | 200 | 200 | 200 | 200 | 200 |
| Brightness | 2000 | 8800 | 1100 | 4400 | 6600 |

Package

- 1. Flight Case
- 2. Plywood Case
- 3. Carton Box



Shenzhen Meiyad
Optoelectronics Co, Ltd

MEIYAD



Shenzhen Meiyad Optoelectronics Co, Ltd

Add: No.9, The Third Industrial Zone of Nangang, Tangtou, Shiyan,
Bao'an District, Shenzhen, China

Tel: +86-135 3053 5995

Web : www.myddisplay.com

Fax : +86-755-8268 7591

Email : sales@mydled.com